

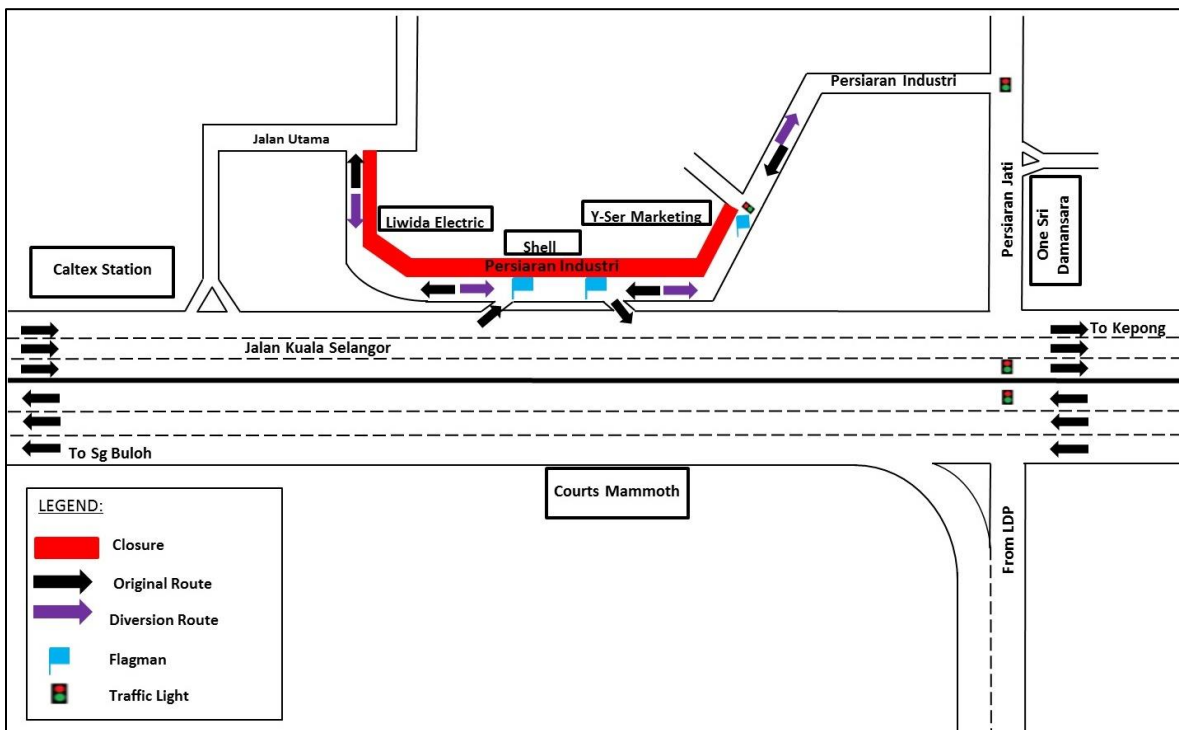
TRAFFIC ANNOUNCEMENT
CONTINUATION OF LONG-TERM LANE CLOSURE ALONG PERSIARAN INDUSTRI (KEPONG-BOUND)
24 AUGUST 2017

Date	26 August 2017 - 09 October 2017
Time	10pm – 6am; 10pm – 10am
Duration	1 month 13 days
Reason	To facilitate site clearing and tree cutting, mapping and piloting, utilities relocation and pipe jacking

There will be continuation of lane closure along Persiaran Industri (Kepong-bound) from **26 August 2017** to **9 October 2017**, as per the following time:

- **Sunday to Friday - 10pm – 6am**
- **Saturday – 10pm – 10am**

The lane closure will be implemented by stages for a stretch of 100 metres. During the closure, motorists using Persiaran Industri will be diverted to the opposite lane by flagmen at both ends using "STOP and GO" method of traffic flow (indicated as **PURPLE** arrows in map).



For media enquiries, please contact:

Mohd Sofie Hassan
 Leanne Ann Susau

Tel: +6019 228 3004
 Tel: +603 7493 3832

sofie@sunway.com.my
 leanne@mgjv-kvmrt.com.my

MMC GAMUDA KVMRT (PDP SSP) SDN BHD (1117100-V)
 Block A, Level 17, Menara Mustapha Kamal, PJ Trade Centre
 No 8, Jalan PJU 8/8A, Bandar Damansara Perdana, 47820 Petaling Jaya
 Selangor Darul Ehsan, Malaysia
 T: +603-7494 2222 F: +603-7727 0222 www.mymrt.com.my