

**TRAFFIC ANNOUNCEMENT**  
**CONTINUATION OF LANE CLOSURES ALONG JALAN KUALA SELANGOR**  
**(SUNGAI BULOH-BOUND AND KEPONG-BOUND)**  
**21 JULY 2017**

<b>Date</b>	23 July 2017 - 22 August 2017
<b>Time</b>	24 hours
<b>Duration</b>	1 month
<b>Reason</b>	To facilitate loading/unloading material and open guard rail, site clearing and tree cutting, mapping and piloting, utilities relocation, temporary works - sheet pile and earth work, soil investigation, road widening and diversion, piling and pile cap, 33kv TNB cable relocation for MRT Construction Works

To facilitate our construction works, there will be continuation of lane closures along Jalan Kuala Selangor (Sungai Buloh-bound and Kepong-bound) from **23 July 2017 to 22 August 2017, intermittently.**

The traffic management plan involves the following closures:

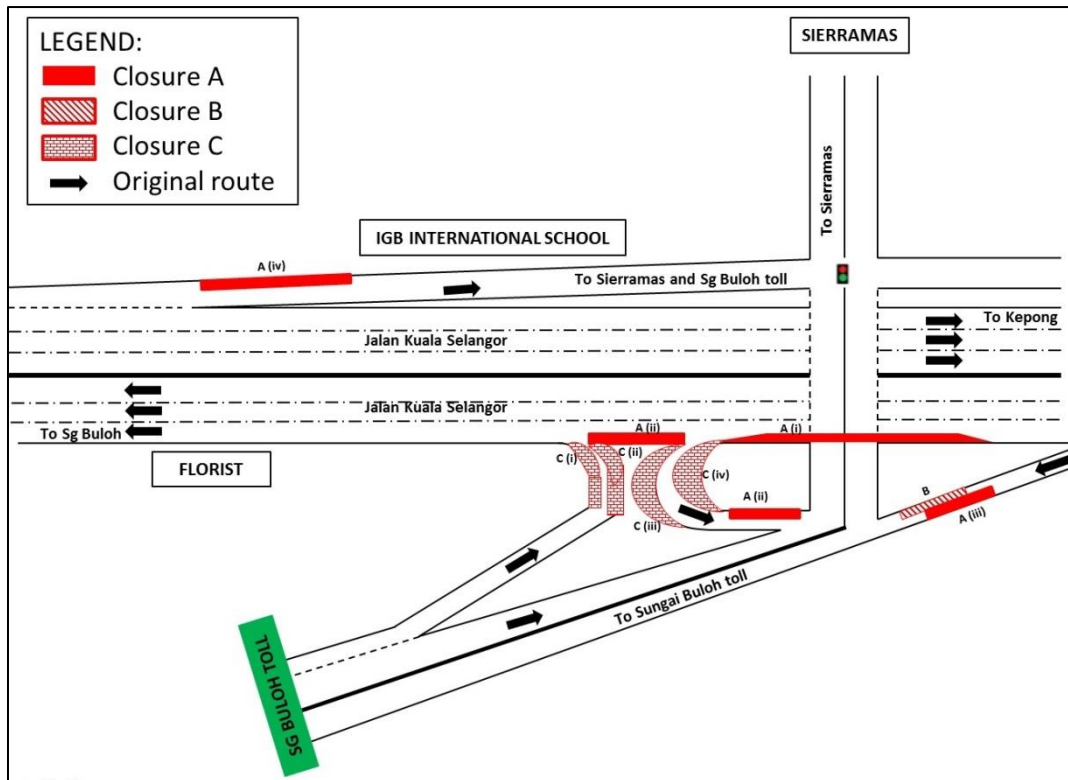
**Closure A (24 hours):**

- i. Left-most lane closure along Jalan Kuala Selangor (Sungai Buloh-bound) at KM47 before the ramp up to Sierramas.
- ii. Left-most lane closure along Jalan Kuala Selangor (Sungai Buloh-bound) after the ramp up to Sierramas for a stretch 100 metres; Left lane closure on the ramp up to Sierramas for a stretch 100 metres
- iii. Left lane closure towards Sungai Buloh toll for a stretch of 100 metres.
- iv. Left lane closure on the ramp up to Sierramas and IGB International School (Kepong-bound) for a stretch of 100 metres.

**Closure B (24 hours):** Right lane closure towards Sungai Buloh toll for a stretch of 100 metres. During this closure, Closure A (iii) will not take place.

**Closure C (10pm – 6am):**

- i. Partial left lane closure after Sungai Buloh toll before joining into Jalan Kuala Selangor (Sungai Buloh-bound) for a stretch of 80 metres.
- ii. Partial right lane closure after Sungai Buloh toll before joining into Jalan Kuala Selangor (Sungai Buloh-bound) for a stretch of 80 metres.
- iii. Partial right lane closure on the ramp up to Sierramas for a stretch 50 metres.
- iv. Partial left lane closure on the ramp up to Sierramas for a stretch of 50 metres.



**For media enquiries, please contact:**

Mohd Sofie Hassan  
Leanne Ann Susau

Tel: +6019 228 3004  
Tel: +603 7493 3832

sofie@sunway.com.my  
leanne@mgjv-kvmrt.com.my

**MMC GAMUDA KVMRT (PDP SSP) SDN BHD (1117100-V)**  
Block A, Level 17, Menara Mustapha Kamal, PJ Trade Centre  
No 8, Jalan PJU 8/8A, Bandar Damansara Perdana, 47820 Petaling Jaya  
Selangor Darul Ehsan, Malaysia  
T: +603-7494 2222 F: +603-7727 0222 [www.mymrt.com.my](http://www.mymrt.com.my)