

TRAFFIC ANNOUNCEMENT
UPDATES ON TRAFFIC MANAGEMENT PLAN FOR MRT CONSTRUCTION
AT CHERAS-KAJANG HIGHWAY
(KAJANG AND KUALA LUMPUR BOUND)
16 FEBRUARY 2017

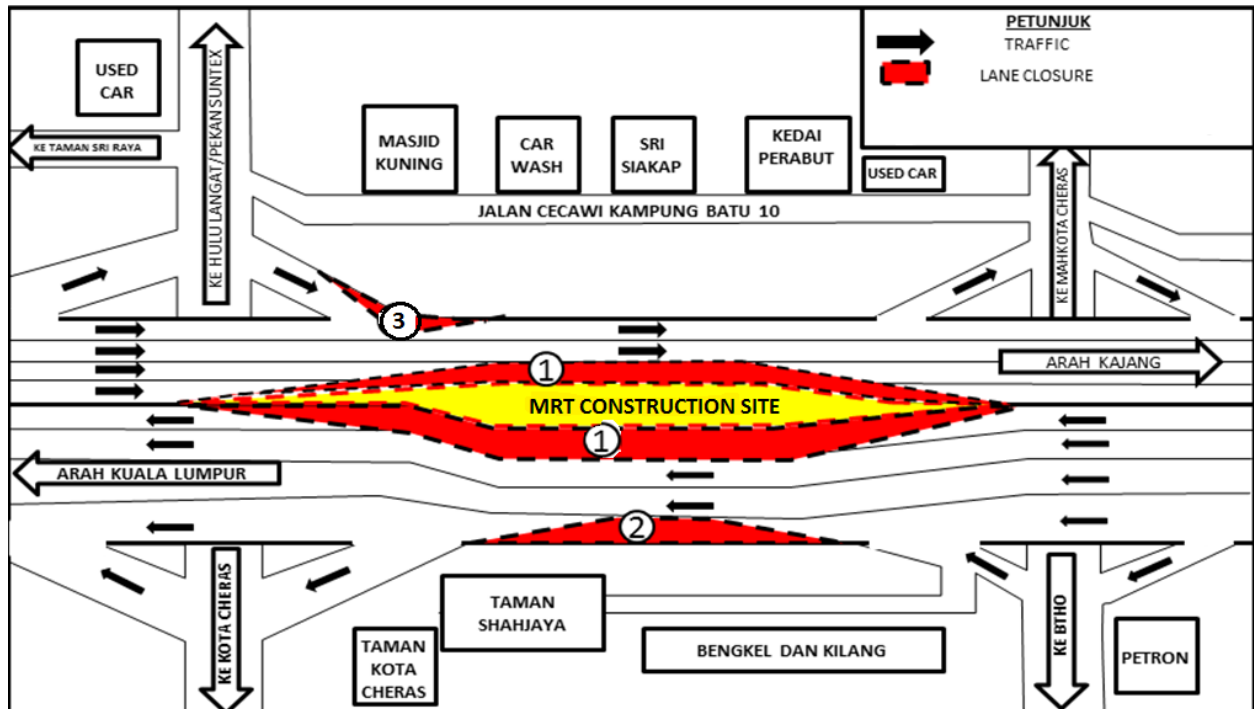
1. CONTINUATION OF LANE CLOSURE AT KM 14.0 UNTIL KM 15.0 ON CHERAS-KAJANG HIGHWAY (KAJANG AND KUALA LUMPUR BOUND)

Date	16 February 2017 – 28 February 2017
Time	Closure 1: 24 Hours Closure 2 & 3 : 10:00PM – 5:00AM
Duration	12 Nights
Reasons	To facilitate reinstatement of street lights, installation of guard rail, construction of kerb and road resurfacing works.

There will be a continuation of lane closures at KM 14.0 until KM 15.0 on the Cheras-Kajang Highway from **16 February 2017 – 28 February 2017**. The closures are as follow:

- Closure 1: 16 February 2017- 28 February 2017, 24 Hours** (Kuala Lumpur-Bound and Kajang-bound)
- Closure 2: 16 February 2017 – 21 February 2017, 10:00PM - 5:00AM** (Kuala Lumpur-bound)
- Closure 3: 22 February 2017 – 28 February 2017, 10:00PM - 5:00AM** (Kajang –bound)

During this closure, **FOUR** lanes will be reduced to **TWO** lanes for **One Kilometer** for both bounds.



MAP 1: CONTINUATION OF LANE CLOSURE AT KM 14.0 UNTIL KM 15.0 ON CHERAS-KAJANG HIGHWAY (KAJANG AND KUALA LUMPUR BOUND)

2. CONTINUATION OF SLIP ROAD CLOSURE AT THE EXIT 702 AND EXIT 703, CHERAS- KAJANG HIGHWAY

Date	16 February 2017 – 28 February 2017
Time	10:00PM until 5:00AM
Duration	12 Nights
Reasons	To facilitate the construction of Taman Suntex MRT Station and Sri Raya MRT Station and road resurfacing works

There will be a continuation of slip road closures at Exit 702 and Exit 703 (Kajang-bound and Kuala Lumpur-bound), Cheras-Kajang Highway from **16 February 2017 – 28 February 2017** starting **10:00PM – 5:00AM**. These closures **will not be conducted simultaneously**.

Closure A (Exit 702, Hulu Langat Interchange, Kajang Bound)

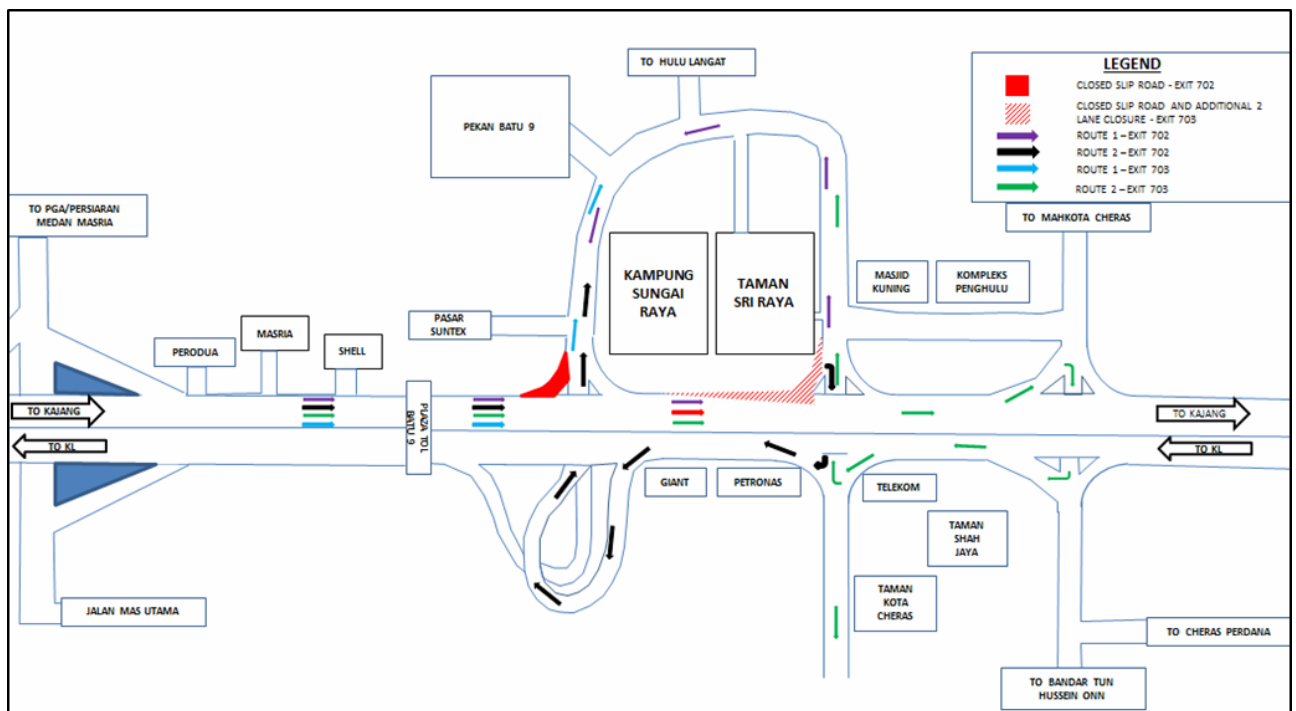
- Motorists from Kuala Lumpur heading towards Hulu Langat/Pekan Batu 9 will have to use Exit 703 (TELEKOM Interchange) entering Jalan Hulu Langat and proceed to Pekan Batu 9/Hulu Langat/Taman Suntex as indicated in **PURPLE** in the appended map,

OR

- Make a U-Turn at Exit 703 (entering Cheras-Kajang Highway – KL Bound) and take Exit 702 Interchange entering Pasar Suntex/Pekan Batu 9 as indicated in **BLACK** in the appended map.

Closure B (Exit 703, Telekom Interchange, Kajang Bound)

- Motorists from Kuala Lumpur heading towards Pekan Batu 9/ Jalan Cheras / Hulu Langat will have to turn left at Exit 702 as indicated in **BLUE** in the map.
- Motorists from Kuala Lumpur heading towards Taman Kota Cheras will be directed to make a U-turn at Bandar Tun Hussien Onn Interchange (Exit 704) and use slip road at Exit 703 (Taman Kota Cheras-bound) as indicated in **GREEN**.



MAP 2: CONTINUATION OF SLIP ROAD CLOSURE AT THE EXIT 702 AND EXIT 703, CHERAS-KAJANG HIGHWAY (KAJANG – BOUND AND KUALA LUMPUR-BOUND)

3. CONTINUATION OF LANE CLOSURE AT EXIT 702 – HULU LANGAT INTERCHANGE

Date	16 February 2017 – 28 February 2017
Time	10:00PM until 5:00AM
Duration	14 Nights
Reasons	To facilitate reinstatement works at Taman Suntex MRT Station

A lane closure and a partial slip road closure will be implemented at the Exit 702 – Hulu Langat Interchange from **16 February 2017 – 28 February 2017** starting **10:00PM - 5:00AM**, **intermittently**.

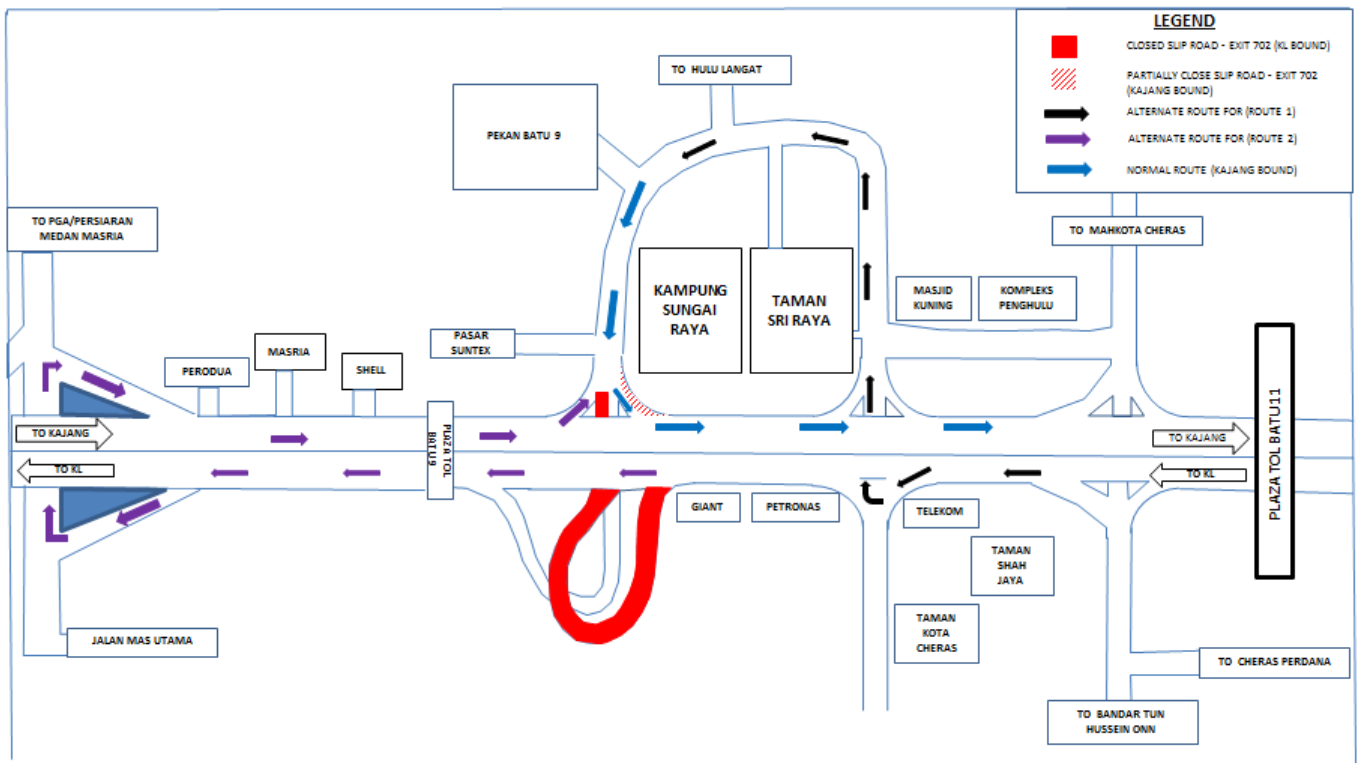
A. Closure at Exit 702, Hulu Langat Interchange (Kuala Lumpur Bound) - Under the flyover of Exit 702 -Hulu Langat Interchange entering Pasar Suntex/Hulu Langat/Pekan Batu 9 (from Kajang).

- During this closure, Motorists heading to Pasar Suntex/Hulu Langat/Pekan Batu 9 (KL-Bound) have to take Exit 703 – TELEKOM Interchange and turn right heading to Hulu Langat/Pekan Batu 9 as indicated in **BLACK** in the appended map.

OR

- Motorists can make a U-Turn at Exit 701 PGA Interchange and take the slip road at Exit 702 – Hulu Langat Interchange heading to Hulu Langat/Pekan Batu 9 as indicated in **PURPLE** in the appended map.

B. Partial slip road closure from Pasar Suntex heading to Kajang (entering Cheras – Kajang Highway). During this closure one lane will be made available for motorists.

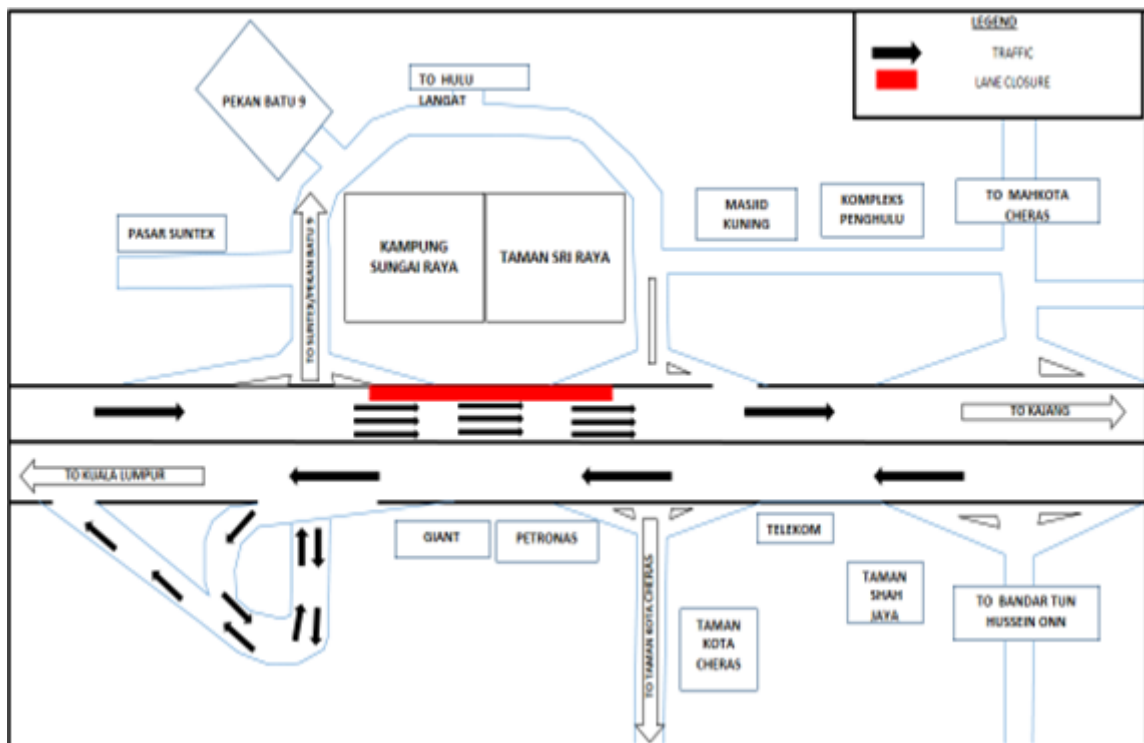


MAP 3: LANE CLOSURE AT EXIT 702 – HULU LANGAT INTERCHANGE

4. CONTINUATION OF PARTIAL LANE CLOSURE AT KM 13.3 UNTIL KM 13.6 CHERAS-KAJANG HIGHWAY (KAJANG BOUND) (INTERMITTENT CLOSURE)

Date	16 February 2017 – 28 February 2017
Time	10:00AM until 5:00PM and 10:00PM until 5:00AM
Duration	12 Nights
Reasons	To facilitate the reinstatement of street lights, installation of guard rail, construction of road kerb , landscape works, construction of noise barrier and road resurfacing works

There will be a continuation of one-lane closure at Cheras – Kajang Highway (Kajang-Bound) from **16 February 2017 – 28 February 2017** between **10:00AM – 5:00PM** and **10:00PM - 5:00 AM** stretching from KM 13.3 until KM 14.7 for **1.3 Kilometre** (nearby Kampong Sungai Raya and Taman Sri Raya). During this closure, **THREE LANES** will remain open for motorist heading to Kajang from Kuala Lumpur.



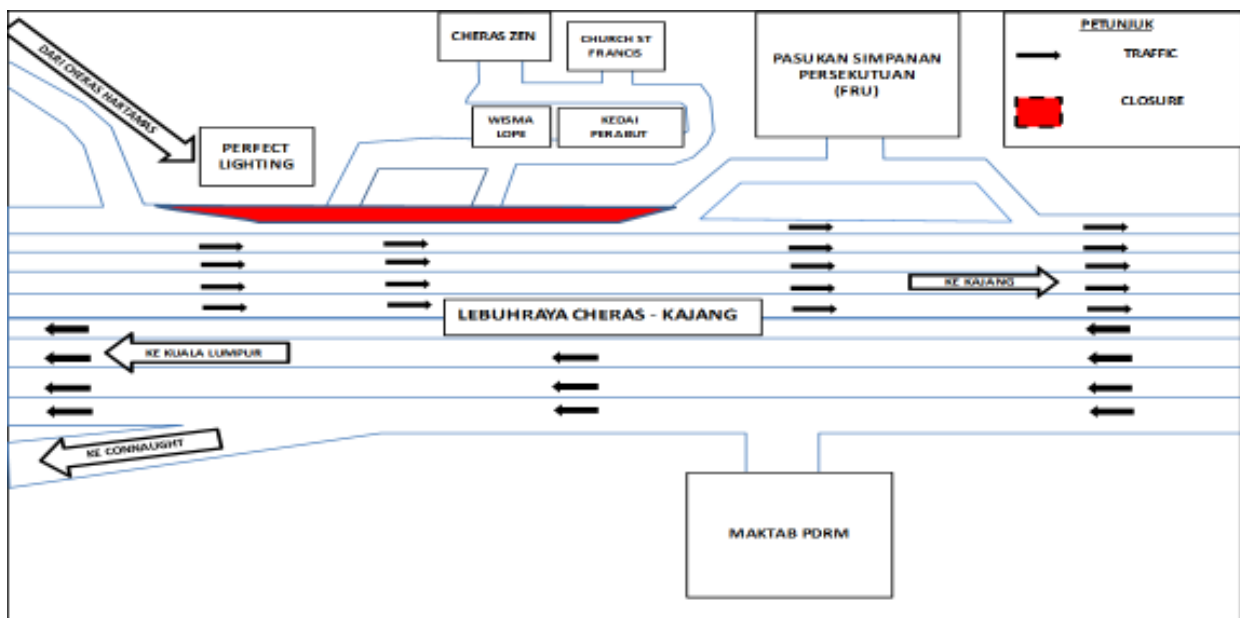
MAP 4: CONTINUATION OF ONE-LANE CLOSURE AT KM 13.3 UNTIL KM 14.7 CHERAS-KAJANG HIGHWAY (KAJANG BOUND)

5. CONTINUATION OF ONE LANE CLOSURE AT KM 10.7 UNTIL KM 10.12 ON CHERAS KAJANG HIGHWAY (KAJANG BOUND) (INTERMITTENT CLOSURE)

Date	16 February 2017 – 28 February 2017
Time	10:00AM until 5:00PM and 10:00PM until 5:00AM
Duration	12 Nights
Reasons	To facilitate the reinstatement of street light, installation of guard rail, construction of road kerbs, landscape works and road resurfacing works

There will be continuation of a one-lane closure at the Cheras – Kajang Highway (Kajang Bound) from KM 10.6 until KM 11.6 for the stretch of **one kilometer** (from Cheras Hartamas entering Cheras – Kajang Highway – Kajang Bound until slip road entering FRU Batu 7, Cheras).

During this closure, **FOUR lanes** will remain opened for motorists heading to Kajang from Kuala Lumpur.



MAP 5: CONTINUATION OF ONE LANE CLOSURE AT KM 10.6 UNTIL KM 11.6 ON CHERAS KAJANG HIGHWAY (KAJANG BOUND)

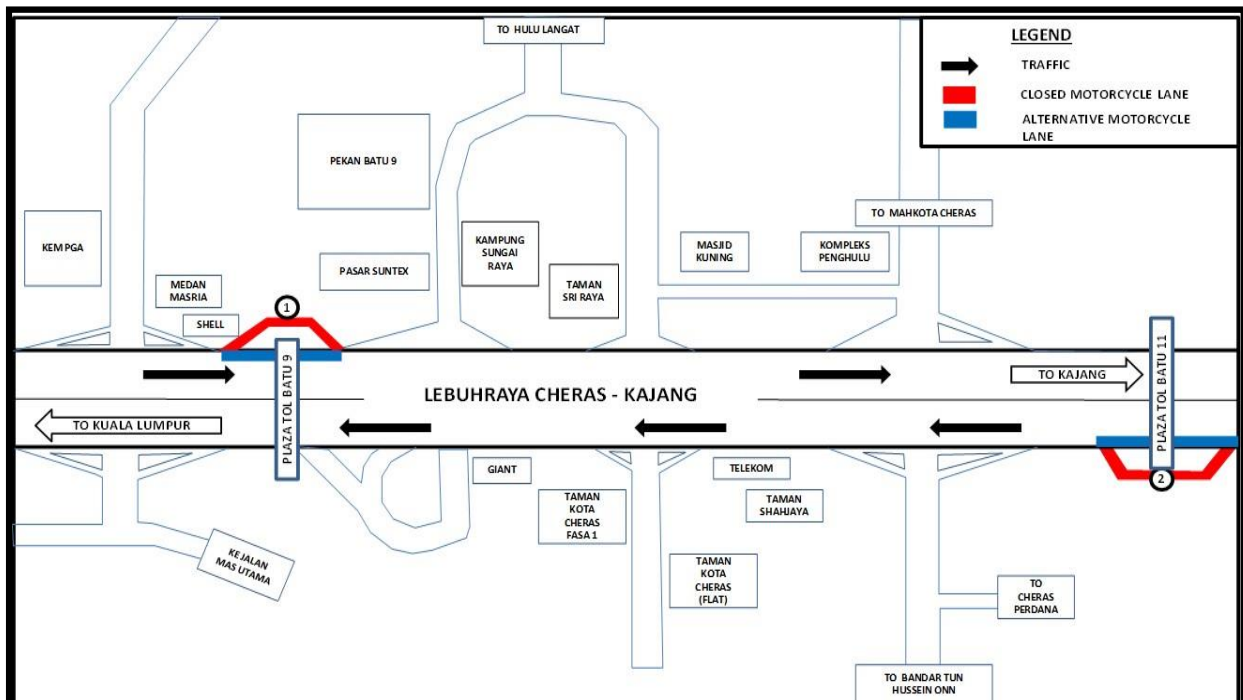
6. CONTINUATION OF MOTORCYCLE LANE CLOSURE AT BATU 9 & BATU 11 TOLLBOOTH OF CHERAS – KAJANG HIGHWAY (KUALA LUMPUR & KAJANG BOUND) (INTERMITTENT CLOSURE)

Date	16 February 2017 – 28 February 2017
Time	9:00AM until 5:00PM and 10:00PM until 5:00AM
Duration	14 Days
Reasons	To facilitate reinstatement of street lights, installation of guard rail, construction of road kerbs, landscape works and road resurfacing works at the motorcycle lane Bt 9 and BTHO MRT Station

There will be a continuation of closure motorcycle lane closure at Batu 9 & Batu 11 Tollbooth on the Cheras – Kajang Highway (Kuala Lumpur & Kajang-bound) from **16 February 2017 – 28 February 2017** starting from **9:00AM – 5:00PM** and from **10:00PM – 5:00AM**. The closures will be as follow:

Closure 1: Closure of motorcycle lane at the Batu 9 Tollbooth of Cheras – Kajang Highway (Kajang-bound). During this closure, all motorcyclists are advised to use the left-most lane near the toll booth as indicated **BLUE** in the appended map.

Closure 2: Closure of motorcycle lane at the Batu 11 Tollbooth of Cheras – Kajang Highway (Kuala Lumpur-bound) During this closure, motorcyclist are advised to use the left-most lane near the toll booth as an alternate route (as indicated **BLUE**).



MAP 6: CONTINUATION OF MOTORCYCLE LANE CLOSURE AT BATU 9 & BATU 11 TOLLBOOTH OF CHERAS – KAJANG HIGHWAY (KUALA LUMPUR & KAJANG BOUND) (INTERMITTENT CLOSURE)

7. CONTINUATION OF PARTIAL LANE CLOSURE AT EXIT 701 – PGA INTERCHANGE CHERAS-KAJANG HIGHWAY (KAJANG BOUND) (INTERMITTENT CLOSURE)

Date	16 February 2017 – 28 February 2017
Time	10:00AM until 4.00PM and 10:00PM until 5:00AM
Duration	12 Nights
Reasons	To facilitate pier painting works, reinstatement of street light and road resurfacing works

There will be a partial lane closure at Exit 701 at the PGA Interchange (Kajang-bound and Kuala Lumpur Bound) starting from **16 February 2017 – 28 February 2017** from **10:00AM – 4:00PM** and from **10:00 PM – 5:00AM**. The closure will be implemented in **THREE stages** as numbered in map.

Stage 1, numbered as 1 (16 February 2017 – 19 February 2017)

- One lane closure on the left-most lane on the slip road entering PGA – Kajang-bound.

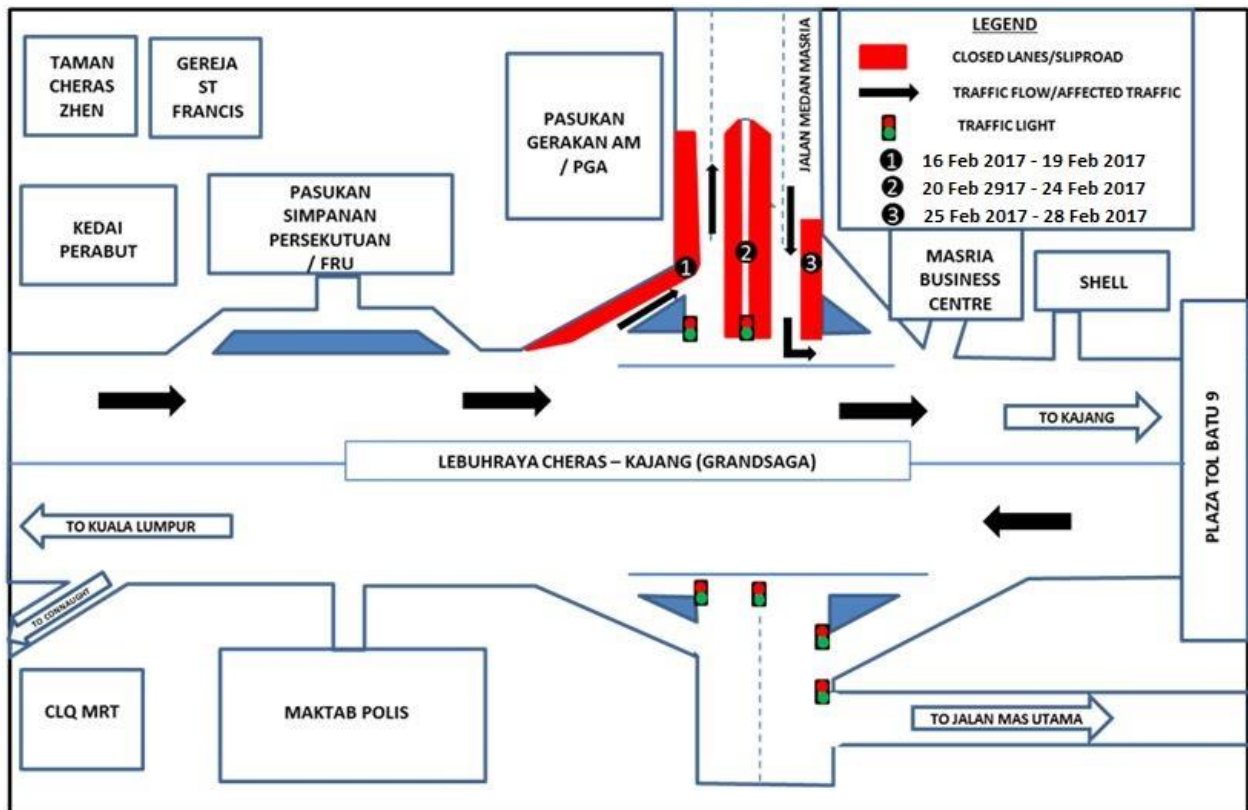
Stage 2, numbered as 2 (20 February 2017 – 24 February 2017)

- Median 1 lane closure on each direction – PGA Bound and Kuala Lumpur -bound.

Stage 3, numbered as 3 (25 February 2017 – 28 February 2017)

- Slip road closure (Kajang Bound) from PGA.

During these closure stages, motorists are advised to use the remaining opened lane on each bound. For the slip road closure during Stage 3, motorists (heading to Kajang) are advised to turn left after the traffic light (Kajang Bound). No other road diversion needed during this closure.

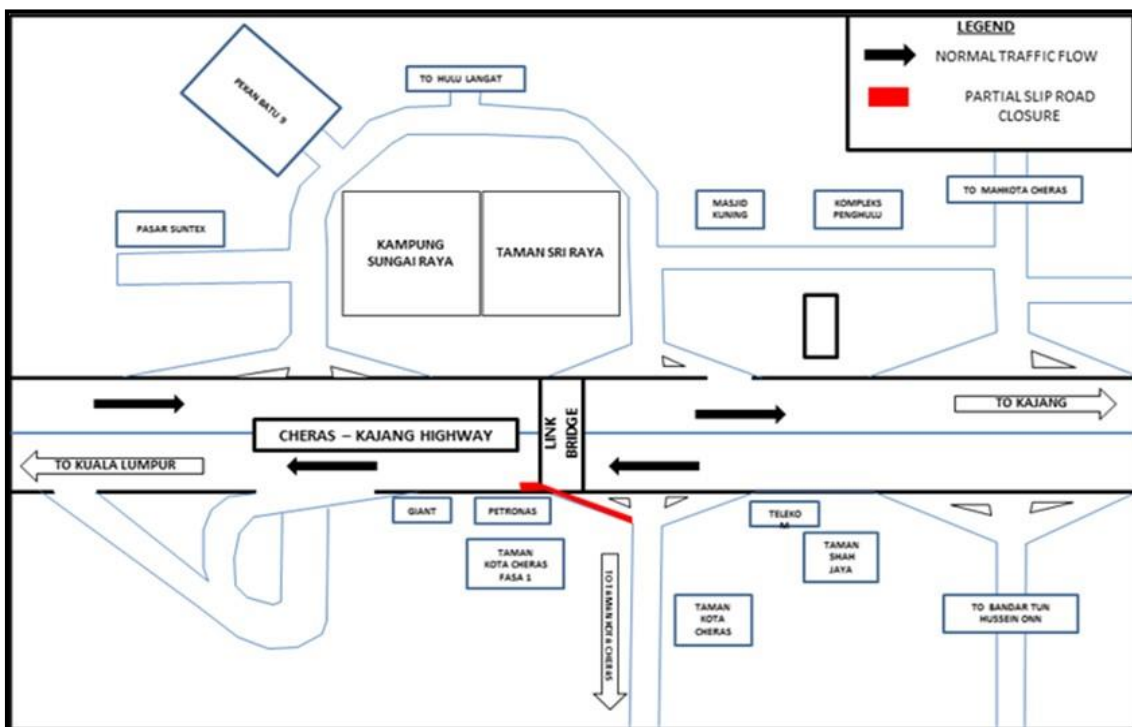


MAP 7: CONTINUATION OF PARTIAL LANE CLOSURE AT EXIT 701 – PGA INTERCHANGE CHERAS-KAJANG HIGHWAY (KAJANG BOUND)

8. CONTINUATION OF PARTIAL LANE AND SLIP ROAD CLOSURE AT EXIT 703 – TELEKOM INTERCHANGE ON CHERAS-KAJANG HIGHWAY (KUALA LUMPUR- BOUND) (INTERMITTENT CLOSURE)

Date	16 February 2017 – 28 February 2017
Time	10:00AM until 4:00PM and 10:00PM until 5:00AM
Duration	12 Days
Reason	To facilitate maintenance works for Taman Sri Raya Link Bridge, reinstatement of street light and road resurfacing works

There will be a partial lane closure on the slip road from Taman Kota Cheras entering the Cheras – Kajang Highway (Kuala Lumpur-bound, nearby Station Petronas Batu 9) from between **10:00AM - 5:00PM** and from between **10:00PM – 5:00AM**. No road diversion will be made during this closure.



MAP 8: CONTINUATION OF PARTIAL LANE AND SLIP ROAD CLOSURE AT EXIT 703 – TELEKOM INTERCHANGE ON CHERAS-KAJANG HIGHWAY (KUALA LUMPUR BOUND)

For media enquiries, please contact:

Hillalluddin Mohd Ali
Siti Fadzillah Ismail

Tel: [+6019 201 0002](tel:+60192010002)
Tel: [+603 7493 3965](tel:+60374933965)

hillalluddin@azrb.com
sitifadzillah@mgjv-kvmrt.com.my