

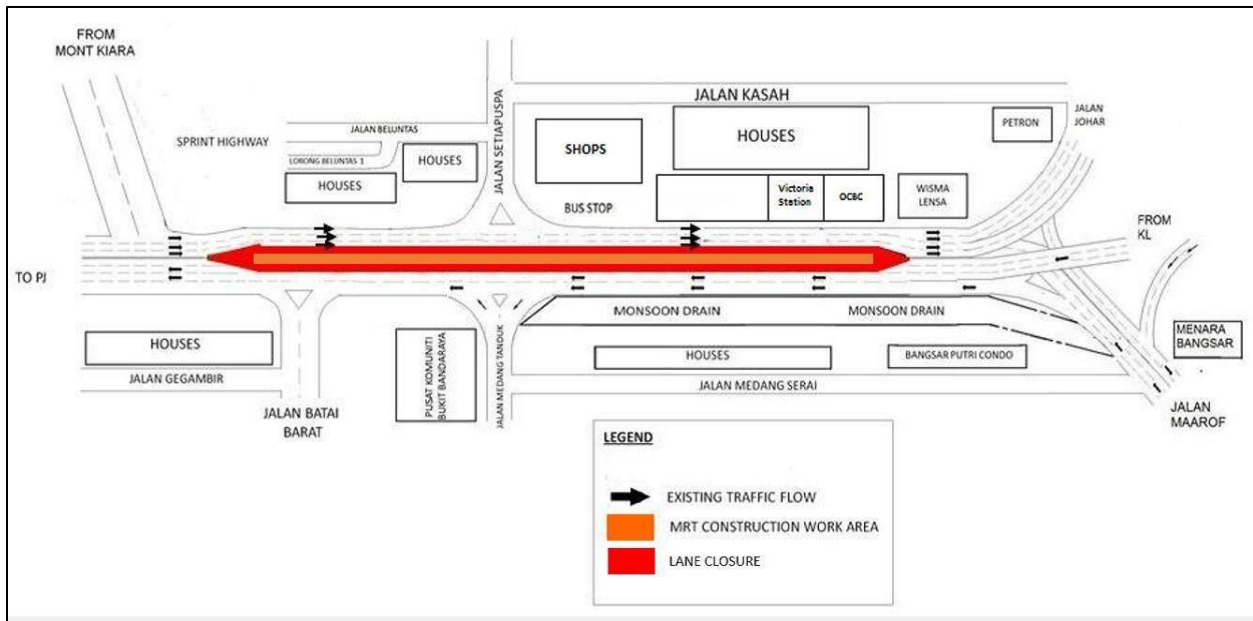
TRAFFIC ANNOUNCEMENT
UPDATES ON TRAFFIC MANAGEMENT PLAN FOR MRT CONSTRUCTION AT SPRINT HIGHWAY
14 FEBRUARY 2017

1. CONTINUATION OF RIGHT-MOST LANE CLOSURE FROM KIARA INTERCHANGE TOWARDS WISMA LENSA (KL-BOUND) AND MEDANG SERAI TOWARDS KIARA INTERCHANGE (PJ-BOUND)

Date	15 February 2017 – 28 February 2017
Time	10:00AM – 4:00PM & 10:00PM – 6:00AM
Duration	13 Days
Reason	To facilitate landscaping and maintenance works

There will be a continuation of the right-most lane closure from Kiara Interchange to Wisma Lensa (KL and PJ-bound) from **15 February 2017 – 28 February 2017, 10:00AM – 4:00PM and 10:00PM – 6:00AM, off peak daily. This closure will be conducted intermittently.**

During this closure, three (3) lanes will be made available for motorists on KL- bound and two (2) lanes will be available for motorists on PJ- bound.



MAP 1: CONTINUATION OF RIGHT MOST LANE CLOSURE FROM KIARA INTERCHANGE TOWARDS WISMA LENSA (KL-BOUND) AND MEDANG SERAI TOWARDS KIARA INTERCHANGE (PJ-BOUND)

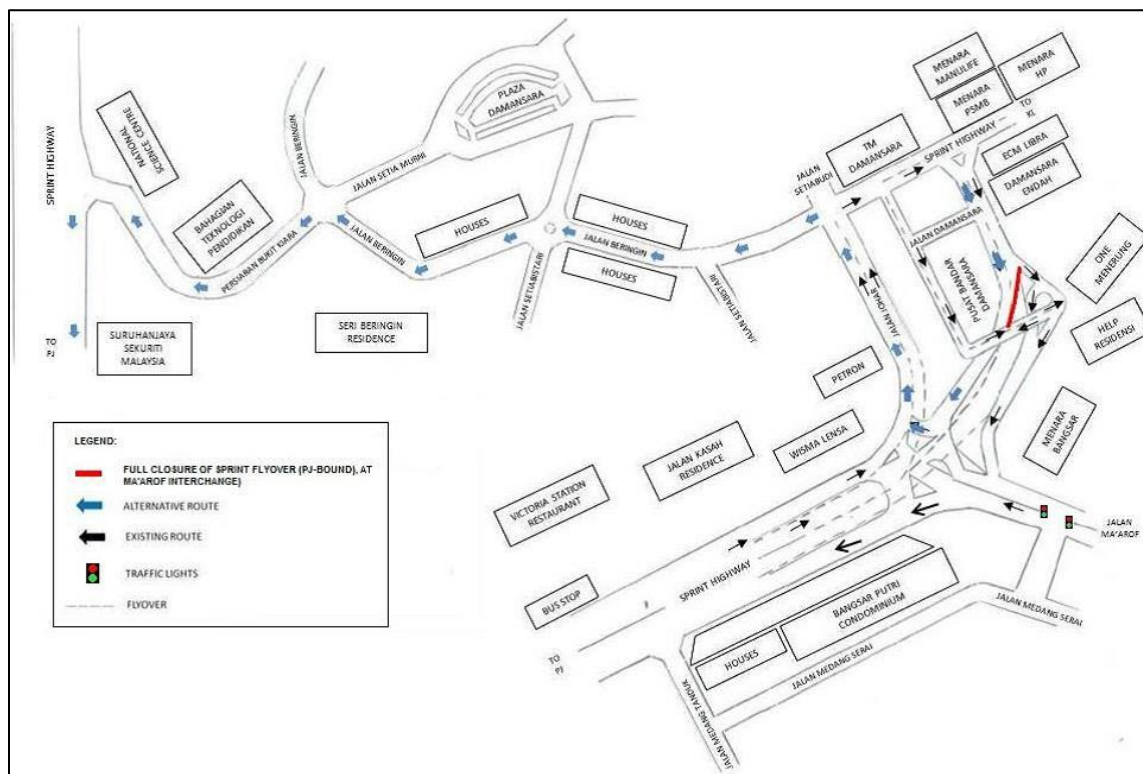
2. CONTINUATION OF FULL NIGHT ROAD CLOSURE OF SPRINT HIGHWAY NEAR PUSAT BANDAR DAMANSARA (PJ-BOUND) (INTERMITTENT CLOSURE)

Date	15 February 2017 – 28 February 2017
Time	10:00PM – 6:00AM (Monday to Friday) 12:00midnight (Saturday) – 12:00 noon (Sunday)
Duration	13 Days
Reason	To facilitate station maintenance works of the MRT Pusat Bandar Damansara Station

SPRINT flyover near Pusat Bandar Damansara (PJ-bound) will undergo a medium- term full road closure starting **15 February 2017 – 28 February 2017, 10:00PM to 6:00AM (Monday to Friday) and 12:00 midnight (Saturday) until 12:00 noon (Sunday).**

During this closure, motorists from KL heading towards PJ will be diverted to turn into Jalan Johar and then turn left into Jalan Beringin. At the roundabout, take the second exit to continue on Jalan Beringin and turn left at the junction to go to Persiaran Bukit Kiara before joining SPRINT Highway to get to PJ.

Motorists from KL to Jalan Ma'arof/ Bangsar will not be affected.



MAP 2: CONTINUATION OF FULL ROAD NIGHT CLOSURE OF SPRINT HIGHWAY NEAR PUSAT BANDAR DAMANSARA (PJ-BOUND)

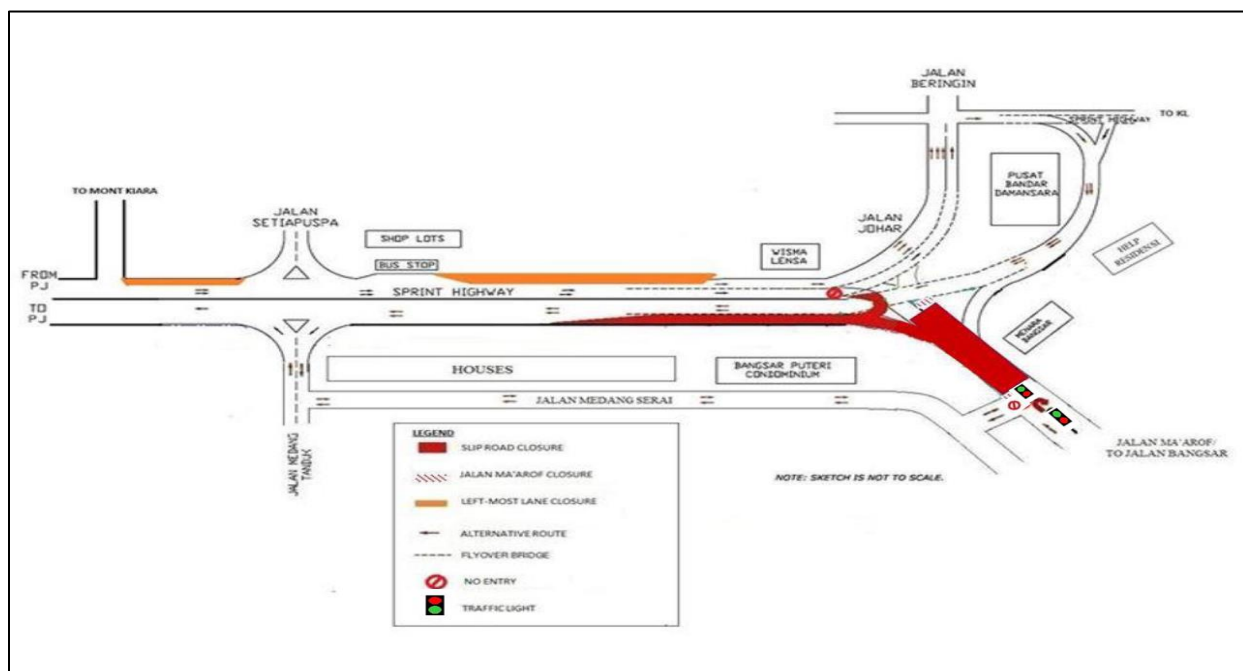
3. CONTINUATION OF NIGHT TRAFFIC MANAGEMENT AT SPRINT HIGHWAY AND JALAN MA'AROF (KL AND PJ-BOUND)

Date	15 February 2017 – 28 February 2017
Time	10:00PM to 6:00AM
Duration	13 Nights
Reason	To facilitate station maintenance works

Jalan Ma'arof (KL bound & PJ bound) will continue to close **INTERMITTENTLY** from **15 February 2017 – 28 February 2017, 10:00 pm to 6:00 am**. The Jalan Ma'arof closure stretches after the junction of Jalan Medang Serai to Ma'arof Interchange (downhill heading towards Jalan Johar) and from Petaling Jaya heading uphill towards Jalan Ma'arof (underneath the SPRINT flyover at Ma'arof Interchange).

During the closure, the following diversions will take place:

- **Motorists from PJ heading towards Jalan Ma'arof** will be diverted towards Pusat Bandar Damansara, going onto SPRINT flyover above Ma'arof Interchange and make a left turn into Jalan Medang Tanduk, and left again into Jalan Medang Serai before joining Jalan Ma'arof.
- **Motorists from Jalan Ma'arof heading towards PJ** will be diverted to turn left into Jalan Medang Serai, and right to Jalan Medang Tanduk to join SPRINT Highway.
- **Motorists from Jalan Ma'arof (from KL direction) returning to KL** will be diverted to make a U-turn at the traffic light junction of Jalan Ma'arof/ Jalan Medang Serai. From there, motorists can head straight into Jalan Bangsar, towards Jalan Duta/ KL.



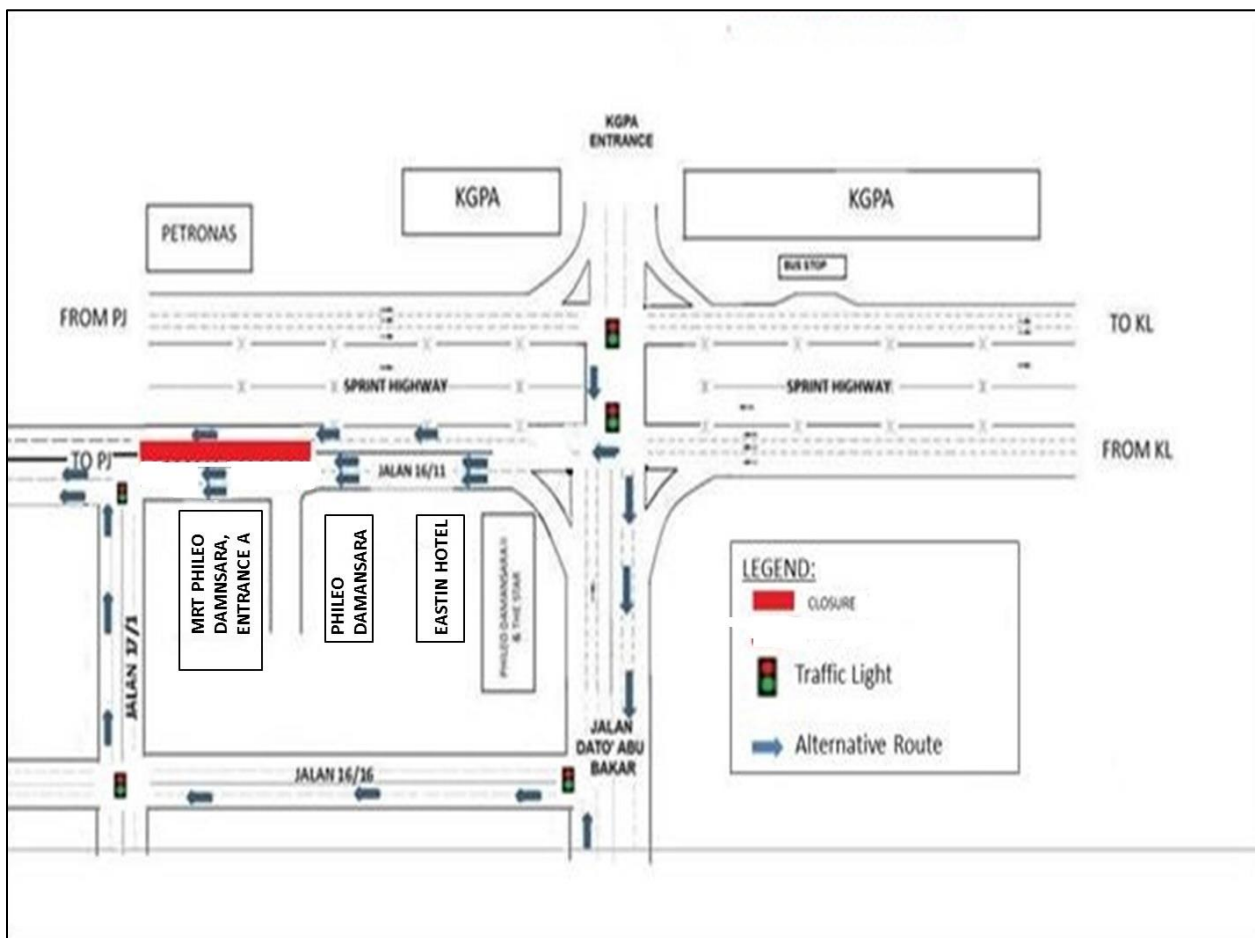
MAP 3: CONTINUATION OF NIGHT TRAFFIC MANAGEMENT AT SPRINT HIGHWAY AND JALAN MA'AROF (KL AND PJ-BOUND)

**4. CONTINUATION OF LANE CLOSURE NEXT TO SPRINT HIGHWAY (DAMANSARA TOLL PLAZA)
(INTERMITTENT CLOSURE)**

Date	15 February 2017 – 28 February 2017
Time	10:00PM – 6:00AM
Duration	13 Nights
Reason	To facilitate station maintenance works

There will be a continuation of the lane closure next to the SPRINT Highway (Damansara Toll Plaza) from **15 February 2017 – 28 February 2017 from 10:00PM – 6:00AM**. During this closure one (1) lane will be made available to the motorists from KL heading towards Petaling Jaya. There will be two (2) lanes available for motorists on Jalan 16/11 going towards Petaling Jaya.

To minimise the traffic impact, motorists from KL on SPRINT Highway heading towards Petaling Jaya can opt to turn into Jalan Dato’ Abu Bakar and turn right into Jalan 16/16 and then right to Jalan 17/1 and join back Jalan 16/11 to head back to Petaling Jaya.



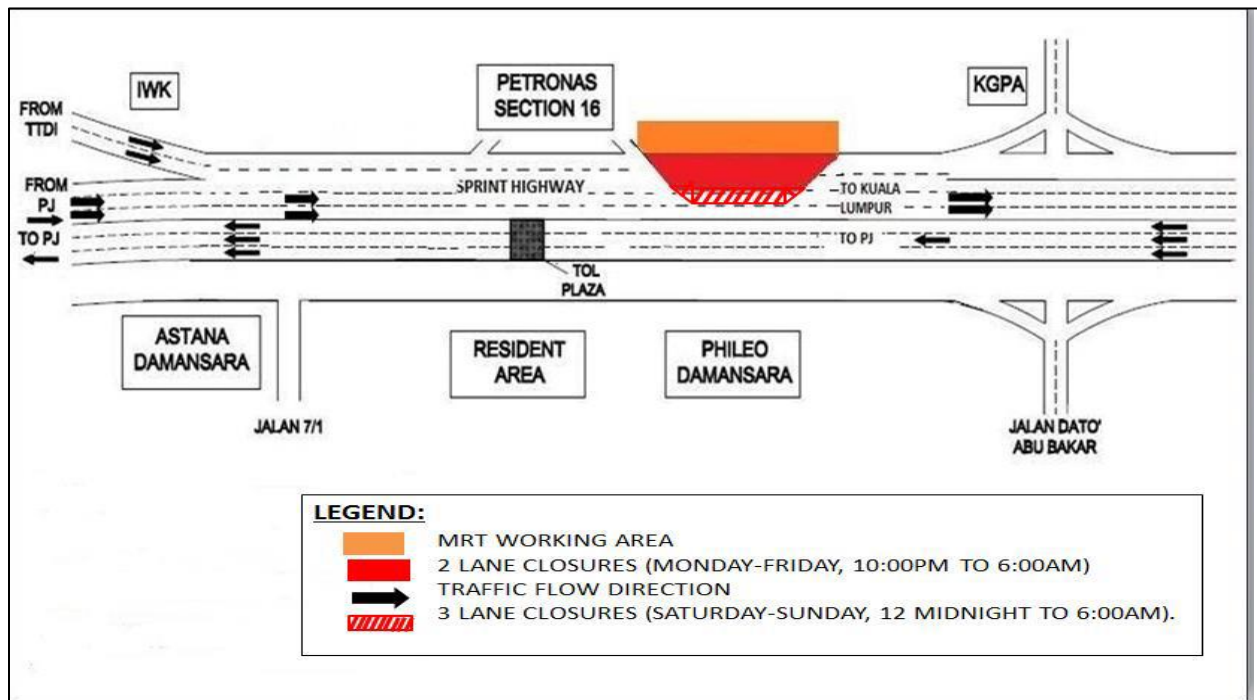
MAP 4: CONTINUATION OF LANE CLOSURE NEXT TO SPRINT HIGHWAY (DAMANSARA TOLL PLAZA)

5. CONTINUATION OF LANE CLOSURE AT SPRINT HIGHWAY AFTER PETRONAS STATION, SECTION 16 (KL-BOUND) (INTERMITTENT CLOSURE)

Date	15 February 2017 – 28 February 2017
Time	10:00PM to 6:00AM (Monday – Friday) 12:00midnight to 6:00AM(Saturday – Sunday)
Duration	13 Nights
Reason	To facilitate station maintenance works

There will be two (2) lanes closure for a stretch of 200 m after the Section 16 Petronas Petrol Station at SPRINT Highway (KL-bound), **from 15 February 2017 – 28 February 2017**. This closure will be divided into a **two-lane closure (Monday-Friday, 10:00PM to 6:00AM)** and a **three-lane closure (Saturday – Sunday, 12 Midnight to 6:00AM)**.

Two (2) lanes (right-most-lane) will be made available for motorists from TTDI and Petaling Jaya heading to Kuala Lumpur from Monday to Friday. One (1) lane (right-most-lane) will be made available for motorists of the same bound during weekend (Saturday-Sunday).



MAP 5: CONTINUATION OF LANE CLOSURE AT SPRINT HIGHWAY AFTER PETRONAS STATION, SECTION 16 (KL-BOUND)

6. CONTINUATION OF NIGHT CLOSURE AT KIARA INTERCHANGE (INTERMITTENT)

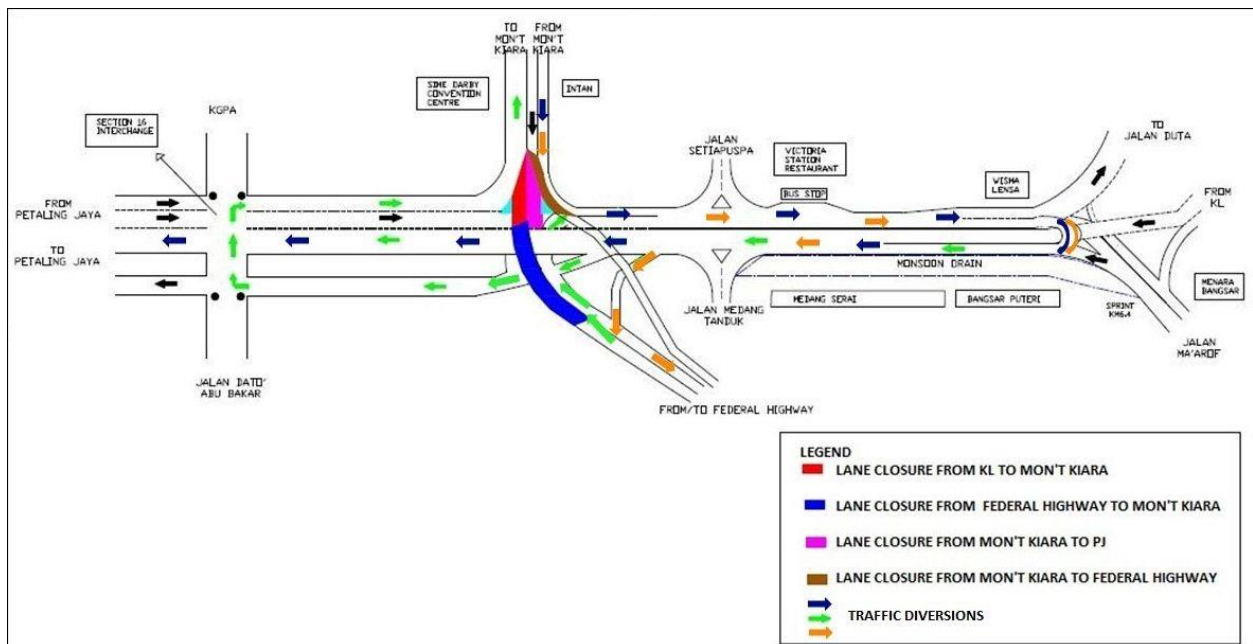
Date	15 February 2017 – 28 February 2017
Time	11:00PM to 6:00AM
Duration	13 Nights
Reason	To facilitate installation of high limit signboard

A continuation of night closure will be implemented at Kiara Interchange from **15 February 2017 until 28 February 2017**. The following temporary closures will be implemented at Kiara Interchange:

- Lane closure from Federal Highway (Kerinci Link) to Mon't Kiara
- Lane closure from Mon't Kiara to Federal Highway (Kerinci Link)

During these closures, motorists will have to follow these diversions:

- (→) From KL (Sprint Highway) and Federal Highway (Kerinci Link) to Mon't Kiara: make a U-turn at the flyover underneath Jalan Dato' Abu Bakar / SPRINT Highway, and turn left to Mon't Kiara.
- (→) From Mon't Kiara to Federal Highway (Kerinci Link): make a U-turn at Maarof Interchange and head towards the Federal Highway (Kerinci Link).



MAP 6: CONTINUATION OF NIGHT CLOSURE AT KIARA INTERCHANGE

For media enquiries, please contact:

Subba Rao
Siti Fadzillah Ismail

Tel: +6019 7736806
Tel: +603 7493 3963

srao@sunway.com.my
sitifadzillah@mgjv-kvmrt.com.my

MMC GAMUDA KVMRT (PDP) SDN BHD (927050-H)

Block A, Level 7, Menara Mustapha Kamal, PJ Trade Centre, No 8, Jalan PJU 8/8A,
Bandar Damansara Perdana, 47820 Petaling Jaya, Selangor, Malaysia
T: 603 7494 2200 F: 603 7722 2643 www.kvmrt.com.my