

TRAFFIC ANNOUNCEMENT
UPDATES ON TRAFFIC MANAGEMENT PLAN FOR MRT SSP CONSTRUCTION ALONG JALAN KUALA SELANGOR AND PERSIARAN DAGANG
06 FEBRUARY 2017

1. CONTINUATION OF LANE CLOSURES ALONG PERSIARAN INDUSTRI (KEPONG-BOUND)

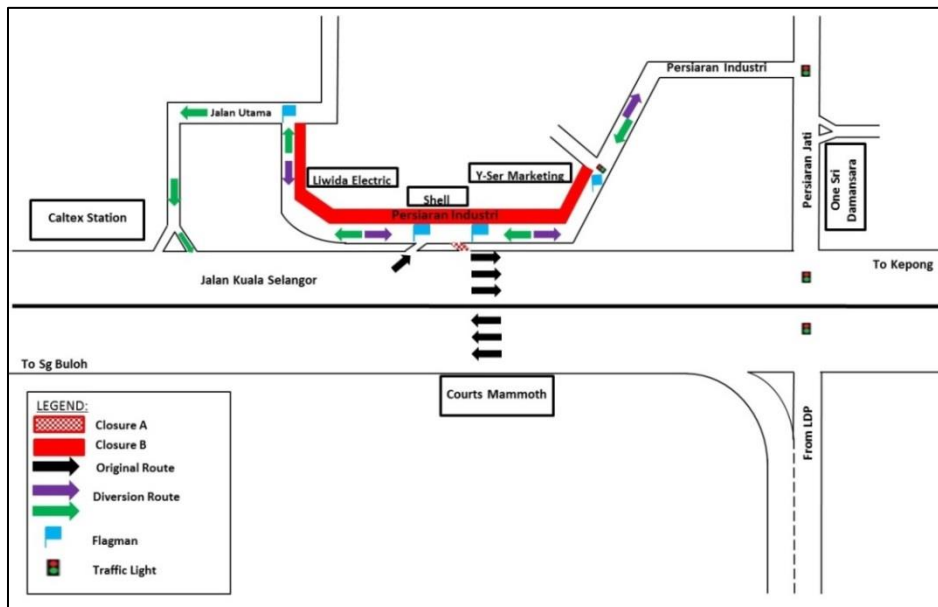
Date	08 February 2017 - 26 March 2017
Time	10pm - 6am; 24 hours
Duration	1 Month 17 days
Reason	To facilitate site clearing and tree cutting, mapping and piloting, utilities relocation and pipe jacking for MRT construction works

There will be continuation of lane closures along Persiaran Industri (Kepong-bound) from **8 February 2017 to 26 March 2017**. The traffic management plan involves the following closures:

Closure A: Closure of access out from Shell Station at Persiaran Industri (Kepong-bound), **24 hours daily**.

Closure B: One lane closure for a stretch of 100 metres by stages along Persiaran Industri, **10pm-6am daily**. During this closure:

- **Motorists from Jalan Kuala Selangor and Jalan Utama heading to Persiaran Industri** will be diverted to the opposite lane by flagmen at both ends using "STOP and GO" method of traffic flow (as indicated in **PURPLE** arrows in map).
- **Motorists from Persiaran Industri heading to Jalan Kuala Selangor** will be diverted to Jalan Utama using "STOP and GO" method before connecting to Jalan Kuala Selangor (Kepong-bound) (as indicated in **GREEN** arrows in map).



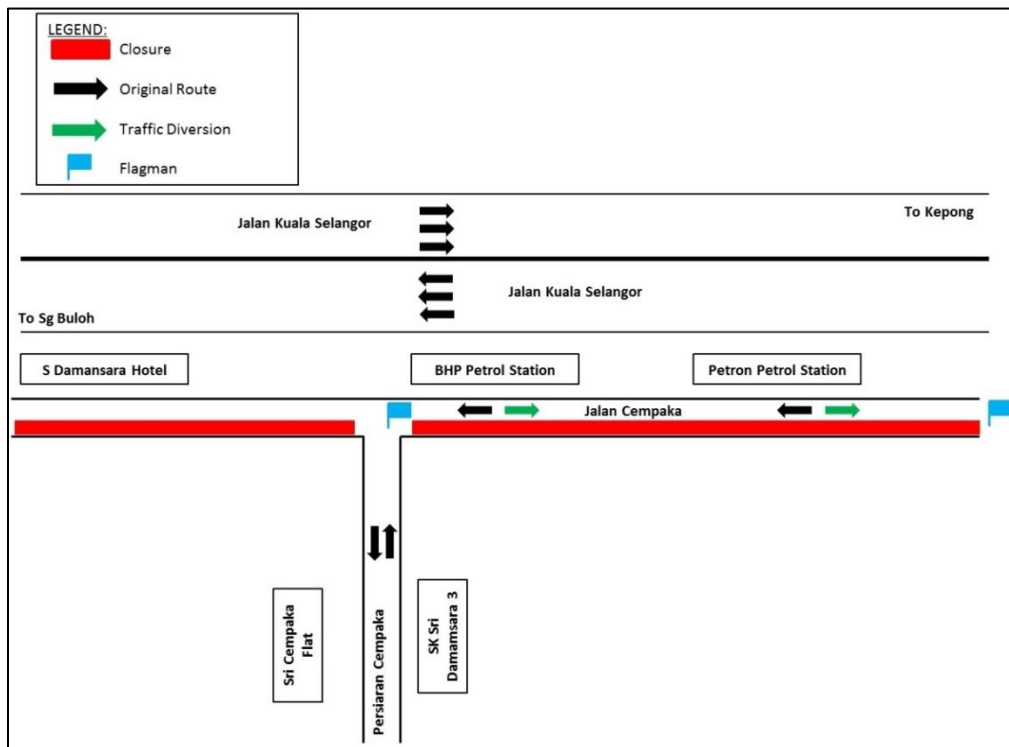
MAP 1 : CONTINUATION OF LANE CLOSURES ALONG PERSIARAN INDUSTRI (KEPONG-BOUND)

2. CONTINUATION OF ONE LANE CLOSURE ALONG JALAN CEMPAKA

Date	08 February 2017 – 07 May 2017
Time	24 hours
Duration	3 months
Reason	To facilitate site clearing and tree cutting, mapping and piloting, utilities relocation and pipe jacking

There will be a continuation of one (1) lane closure for a stretch of approximately 300 metres along Jalan Cempaka from **8 February 2017 until 7 May 2017, 24 hours daily**.

During the closure **motorists from Jalan Cempaka to Persiaran Cempaka** will be diverted to the opposite lane by flagman at both end (Persiaran Cempaka-bound) using "STOP" and "GO" method of traffic flow (as indicated in **GREEN** arrows in map).



MAP 2 : CONTINUATION OF ONE LANE CLOSURE AT JALAN CEMPAKA

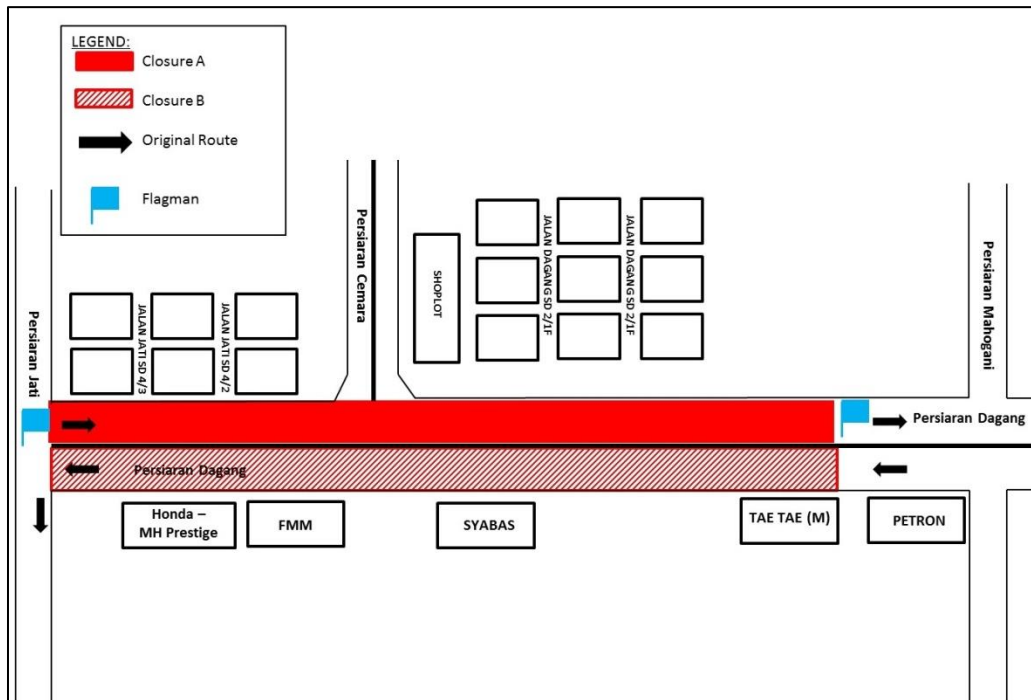
3. CONTINUATION OF INTERMITTENT ONE LANE CLOSURE ALONG PERSIARAN DAGANG

Date	08 February 2017 – 07 May 2017
Time	8am – 6pm; 10pm – 6am
Duration	3 months
Reason	To facilitate site clearing and tree cutting, installation of noise barrier, mapping and piloting, road widening and utilities relocation

There will be a continuation of one lane closure for a stretch of 200 metres along Persiaran Dagang (both direction) **from 08 February 2017 – 07 May 2017, 8am-6pm and 10pm-6am, intermittently.** Following are the closures that will take place:

- **Closure A:** Motorists heading towards Persiaran Mahogani/LDP
- **Closure B:** Motorists heading towards Persiaran Jati

During these closures, motorists will be diverted to the opposite lane by flagman at both direction using "STOP and GO" method of traffic flow. **The closures are in stages and at any one time there will be one (1) lane available for motorists.**



MAP 3 : CONTINUATION OF INTERMITTENT ONE LANE CLOSURE ALONG PERSIARAN DAGANG

For media enquiries, please contact:

Mohd Sofie Hassan

Tel: +6019 228 3004

sofie@sunway.com.my

Leanne Ann Susau

Tel: +603 7493 3832

leanne@mgjv-kvmrt.com.my

MMC GAMUDA KVMRT (PDP SSP) SDN BHD (1117100-V)
 Block A, Level 17, Menara Mustapha Kamal, PJ Trade Centre
 No 8, Jalan PJU 8/8A, Bandar Damansara Perdana, 47820 Petaling Jaya
 Selangor Darul Ehsan, Malaysia
 T: +603-7494 2222 F: +603-7727 0222 www.kvmrt.com.my