

**TRAFFIC ANNOUNCEMENT**  
**UPDATES ON TRAFFIC MANAGEMENT PLAN FOR MRT SSP CONSTRUCTION ALONG JALAN**  
**SULTAN AZLAN SHAH, JALAN JINJANG PERMAI 2 AND JALAN KEPONG**  
**31 JANUARY 2017**

**1. CONTINUATION OF NIGHT LANE CLOSURES ALONG SULTAN AZLAN SHAH - NEAR POS MALAYSIA (NORTH-BOUND AND SOUTH-BOUND)**

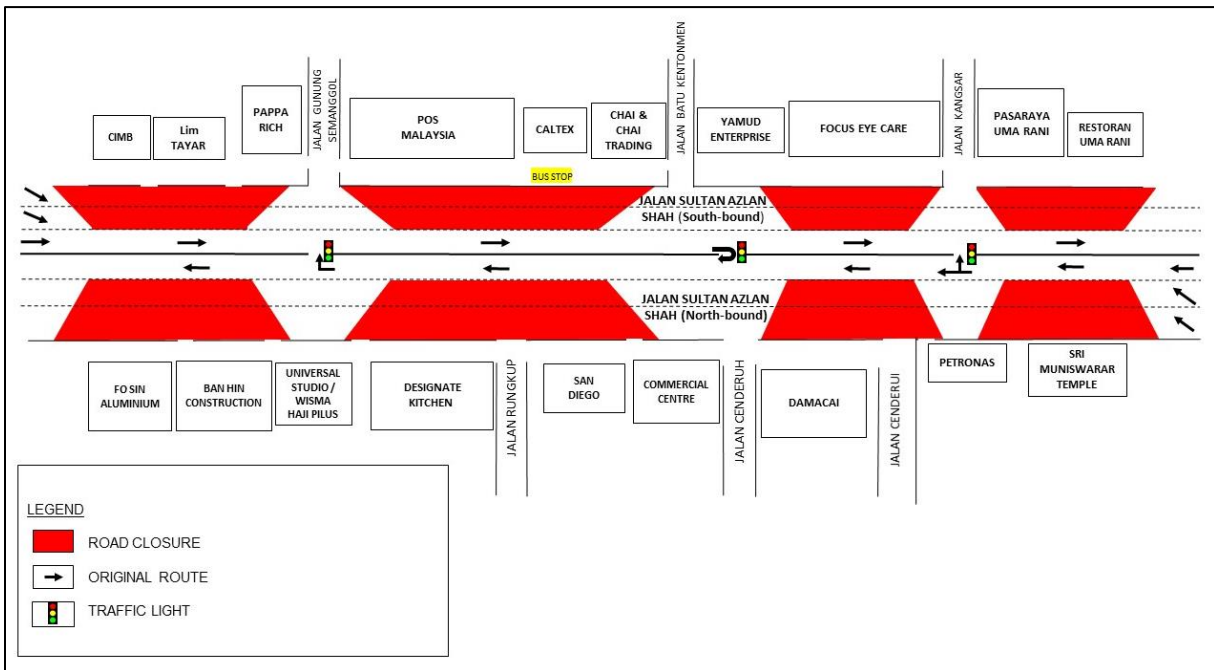
<b>Date</b>	02 February 2017 - 02 May 2017
<b>Time</b>	10pm – 6am
<b>Duration</b>	3 months
<b>Reason</b>	To facilitate loading/unloading material, tree cutting, piloting, soil investigation, utilities relocation, drainage works, retaining wall, road curb demolition, road widening and box culvert works for MRT construction works.

There will be continuation of night lane closures by stages along Jalan Sultan Azlan Shah (near Pos Malaysia) from **02 February 2017 to 02 May 2017, 10pm - 6am intermittently.**

The traffic management plan involves the following closures:

**Closure 1**

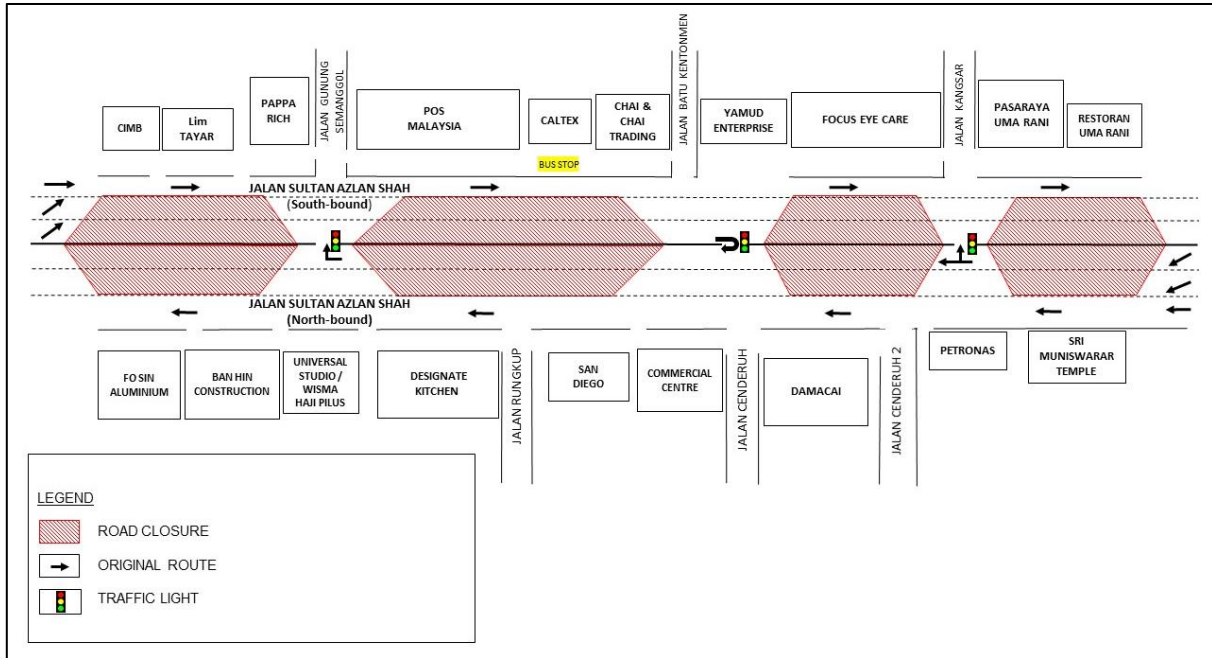
- Jalan Sultan Azlan Shah (North-bound) - Slow and middle lane closures from Sri Muniswarar Temple to Fo Sin Aluminium.
- Jalan Sultan Azlan Shah (South-bound) - Slow and middle lane closures from CIMB to Uma Rani.



**MAP 1 : CONTINUATION OF NIGHT LANE CLOSURES ALONG SULTAN AZLAN SHAH - NEAR POS MALAYSIA (NORTH-BOUND AND SOUTH-BOUND)**

## Closure 2

- Jalan Sultan Azlan Shah (North-bound) - Fast and middle lane closures from Sri Muniswarar Temple to Fo Sin Aluminium.
- Jalan Sultan Azlan Shah (South-bound) - Fast and middle lane closures from CIMB to Uma Rani.



**MAP 2 : CONTINUATION OF NIGHT LANE CLOSURES ALONG SULTAN AZLAN SHAH  
- NEAR POS MALAYSIA (NORTH-BOUND AND SOUTH-BOUND)**

The closures will be implemented intermittently and at any one time there will be one (1) lane made available for motorists on both bounds.

**2. CONTINUATION OF NIGHT LANE CLOSURES ALONG SULTAN AZLAN SHAH – NEAR KOMPLEKS MUTIARA (NORTH-BOUND AND SOUTH-BOUND)**

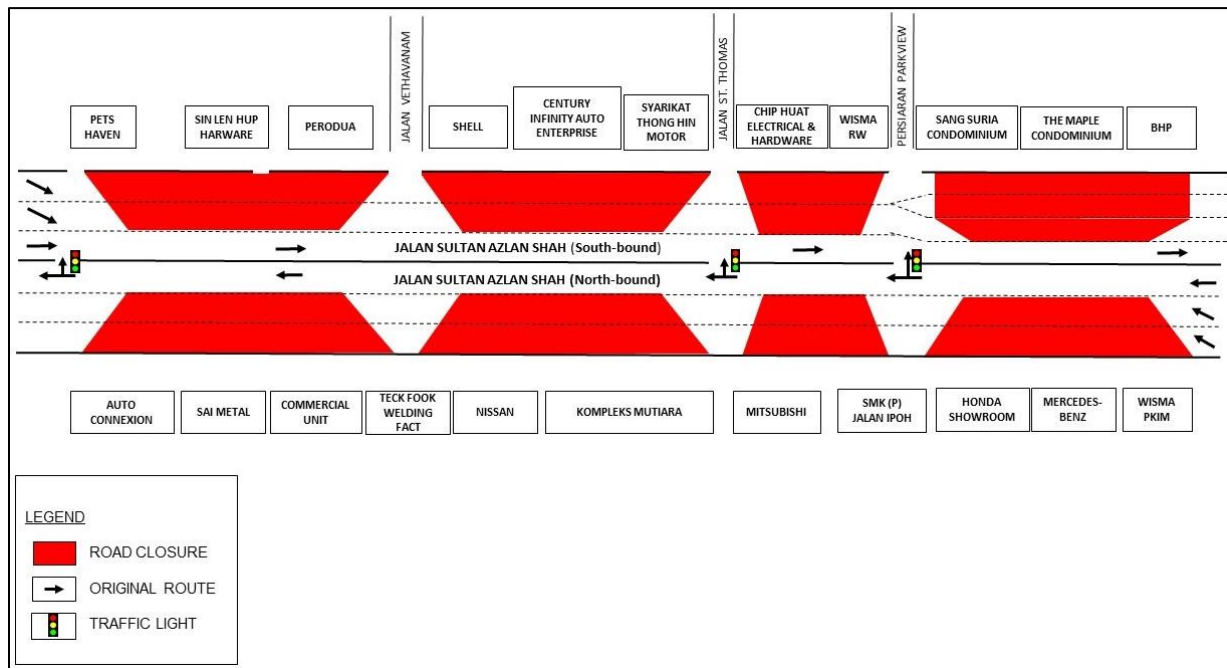
<b>Date</b>	02 February 2017 - 02 May 2017
<b>Time</b>	10pm – 6am
<b>Duration</b>	3 months
<b>Reason</b>	To facilitate loading/unloading material, tree cutting, piloting, soil investigation, utilities relocation, drainage works, retaining wall, road curb demolition, road widening and box culvert works for MRT construction works.

There will be continuation of night lane closures by stages along Jalan Sultan Azlan Shah (near Kompleks Mutiara) from **02 February 2017 to 02 May 2017, 10pm - 6am intermittently.**

The traffic management plan involves the following closures:

**Closure 1**

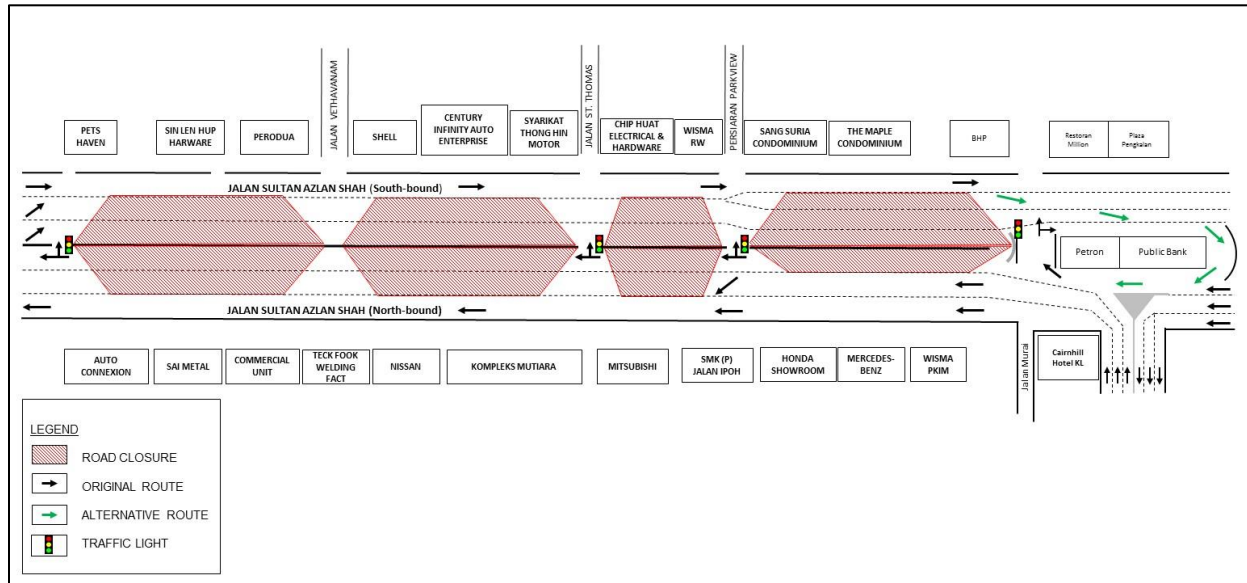
- Jalan Sultan Azlan Shah (North-bound) - Slow and middle lane closures from Wisma PKIM to Auto Connexion.
- Jalan Sultan Azlan Shah (South-bound) - Slow and middle lane closures from Pets Haven to BHP. Lane closures from Sang Suria Condominium to BHP will take place from **8pm – 12am only.**



**MAP 1 : CONTINUATION OF NIGHT LANE CLOSURES ALONG SULTAN AZLAN SHAH – NEAR KOMPLEKS MUTIARA (NORTH-BOUND AND SOUTH-BOUND)**

## Closure 2

- Jalan Sultan Azlan Shah (North-bound) - Fast and middle lane closures from Wisma PKIM to Auto Connexion.
- Jalan Sultan Azlan Shah (South-bound) - Fast and middle lane closures from Pets Haven to BHP. Lane closures from Sang Suria Condominium to BHP will take place from **8pm – 12am only**. The U-turn in front of BHP will also be closed during this closure. Motorists from Jalan Sultan Azlan Shah (South-bound) heading to Jalan Sultan Azlan Shah (North-bound) will have to go straight and make the U-turn after Public Bank.



**MAP 2 : CONTINUATION OF NIGHT LANE CLOSURES ALONG SULTAN AZLAN SHAH – NEAR KOMPLEKS MUTIARA (NORTH-BOUND AND SOUTH-BOUND)**

The closures will be implemented intermittently and at any one time there will be one (1) lane made available for motorists on both bounds.

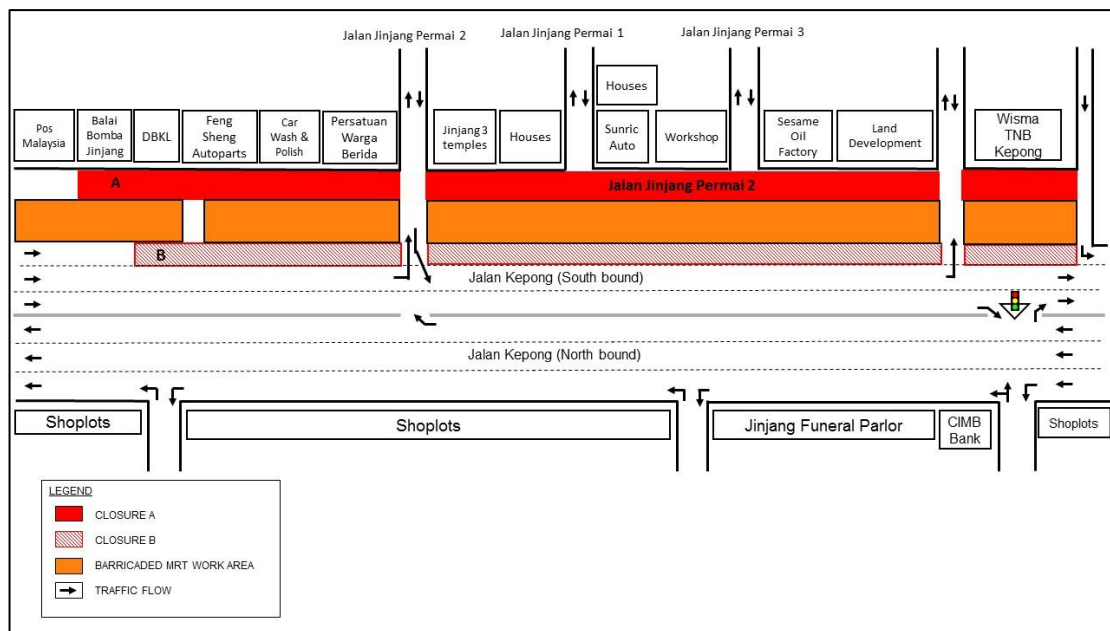
### 3. CONTINUATION OF NIGHT LANE CLOSURES BY STAGES ALONG JALAN JINJANG PERMAI 2 & JALAN KEPONG (SOUTH-BOUND)

<b>Date</b>	02 February 2017 - 02 May 2017
<b>Time</b>	10pm – 6am
<b>Duration</b>	3 months
<b>Reason</b>	To facilitate loading/unloading material and utilities relocation for MRT construction works.

There will be a continuation of night lane closure by stages along Jalan Jinjang Permai 2 and Jalan Kepong from **02 February 2017 to 02 May 2017, 10pm - 6am**. The traffic management plan involves the following closures:

- **Closure A:** Internal road of Jalan Jinjang Permai 2 starting from Balai Bomba Jinjang to Wisma TNB Kepong. Flagman will be in place using "STOP" and "GO" method to indicate the traffic flow.
- **Closure B:** Left most lane closure by stages along Jalan Kepong (South-bound) for a stretch of 180 meters.

The closures are in stages and at any one time there will be two (2) lanes made available for motorists on Jalan Kepong (South-bound).



**MAP 1 : CONTINUATION OF NIGHT LANE CLOSURES BY STAGES ALONG JALAN JINJANG PERMAI 2 & JALAN KEPONG (SOUTH-BOUND)**

**For media enquiries, please contact:**

Juliet Choong Wai Gaik

Tel: +6012 601 0318

julietchoong@ijm.com

Leanne Ann Susau

Tel: +603 7493 3832

leanne@mgjv-kvmrt.com.my

**MMC GAMUDA KVMRT (PDP SSP) SDN BHD (1117100-V)**

Block A, Level 17, Menara Mustapha Kamal, PJ Trade Centre

No 8, Jalan PJU 8/8A, Bandar Damansara Perdana, 47820 Petaling Jaya

Selangor Darul Ehsan, Malaysia

T: +603-7494 2222 F: +603-7727 0222 [www.kvmrt.com.my](http://www.kvmrt.com.my)